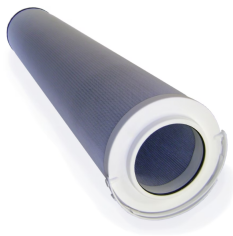


Replacement Elements - HFS-HFD Series

Part #: 939242Q



The HFS-HFD-Series elements are available in three executions: The Ecoglass version without inner core, the conventional Cellulose and Metal mesh version. These elements are designed with the latest in filter media technology for best system protection.

[View Series Page](#) [Share / Email](#) [Print](#)

Technical Specifications

Product Series:	HFS-HFD	Filter Element Type:	Eco element for re-usable ECO-core
Seal Material:	Nitrile	Length:	2
Maximum Pressure Differential:	10 bar on ECO-core (ISO 2941)	Filter Element:	10QE Ecoglass *

[Safety Warning](#)

Item Information

Items marked with an asterisk * in the drop-down menus are standard choices.

The HFS-HFD Series is a range of High flow, Low pressure, single and duplex filters.

HFS-HFD series filters are offered with three types of element:

- The Conventional Cellulose element.
- The Conventional Metal mesh element.
- The Ecoglass element, a environmentally friendly design without metal inner core. The Eco elements are used in versions of the HFS-HFD filter with a reusable Eco inner core. Having no metal content in the element reduces the overall weight with 50% and makes it possible to dispose of the used element in a environmentally friendly way by incineration, also lowering disposal costs.

Using genuine Parker replacement elements guarantees Parker's quality of filtration. Using after market filters with unknown media quality may save initial cost, but can increase overall costs by requiring more element change outs and potentially causing system downtime. Protect your investment by always buying genuine Parker replacement elements.

CAD Drawings + Files



Related Documents



Parker Sales Company UK

psc.uk.webform@support.parker.com
[+44 \(0\)1926 317878](tel:+441926317878)

+ Company Information

+ Global Operations

+ Help & Support

+ Follow Us :

© PARKER HANNIFIN CORP 2023

ENGINEERING YOUR SUCCESS.

[SITE MAP](#) [SAFETY](#) [PRIVACY POLICIES](#) [TERMS AND CONDITIONS](#)

