

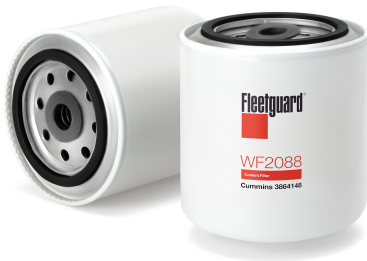


# Product Specification

## WF2088

Water, Spin-On

Choose Fleetguard® WF2088 DCA2 water filter with chemicals for coolant system protection that provides filtration and additive reinhibition. DCA2 water filters are designed for use with Fleetcool, Fleetcool EX or similar technology.



<b>Thread Size</b>	11/16-16 UN-2B
<b>Largest OD</b>	93.12 mm
<b>COOLANT ADDITIVE FORM</b>	PELLET
<b>Additive Base</b>	DCA2
<b>Length</b>	105.44 mm
<b>Gasket Inside Diameter</b>	62.53 mm
<b>Gasket OD</b>	71.98 mm
<b>Seam OD</b>	93.78 mm
<b>Chemical Additive</b>	DCA2 (MODIFIED)

This publication and all information contained or referenced in it (hereinafter "Publication") are provided as a convenience to Cummins Filtration customers "as is" without any warranties,

express or implied, including warranties of merchantability, fitness for a particular purpose, or non-infringement of intellectual property. Cummins Filtration does not warrant the accuracy nor completeness of the Publication; may make changes to the Publication at any time without notice; and makes no commitment to update the Publication.

The Publication may refer to products, programs, or services that are not available in your country or local area. Consult Cummins Filtration directly for information regarding the products, programs, and services that may be available to you. Applicable law may not allow the exclusion of implied warranties, so the above exclusion may not apply to you. © 2023 Cummins Filtration Inc. All Rights Reserved