

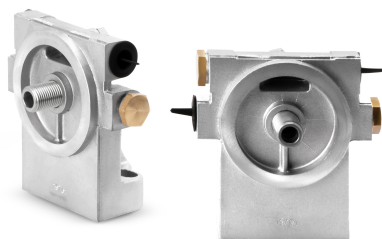


# Product Specification

## 3902309S

### Fuel Filter Head

Service products include Fleetguard® 3902309S, premium fuel filter head. Fleetguard offers a one stop shop of filters and service products covering the widest scope of engine applications in the on and off highway markets.



<b>BPV OPENING DP</b>	No
<b>Overall Width</b>	4.02 inch
<b>Length</b>	2.24 inch
<b>Largest Inlet Thread Diameter</b>	0.55 inch
<b>Largest Outlet Thread Diameter</b>	0.55 inch
<b>Largest Inlet Thread Class</b>	6H
<b>Largest Inlet Thread Form</b>	Metric
<b>Largest Inlet Thread Type</b>	Internal
<b>Largest Outlet Thread Class</b>	6H
<b>Largest Outlet Thread Form</b>	Metric
<b>Largest Outlet Thread Type</b>	Internal
<b>Mounting Orientation</b>	Vertical
<b>Pressure Diagnosis Port</b>	No

This publication and all information contained or referenced in it (hereinafter "Publication") are provided as a convenience to Cummins Filtration customers "as is" without any warranties, express or implied, including warranties of merchantability, fitness for a particular purpose, or non-infringement of intellectual property. Cummins Filtration does not warrant the accuracy nor completeness of the Publication; may make changes to the Publication at any time without notice; and makes no commitment to update the Publication.

The Publication may refer to products, programs, or services that are not available in your country or local area. Consult Cummins Filtration directly for information regarding the products, programs, and services that may be available to you. Applicable law may not allow the exclusion of implied warranties, so the above exclusion may not apply to you. © 2023 Cummins Filtration Inc. All Rights Reserved