



High Pressure Filter Models 14P, 24P, 34P

Max 500 l/min - 350 bar

Brochure 2394-3-GB





An established range of high pressure filters, rated to 350 bar.

Fitted with the unique Parker "Tell-Tale"® visual indicator.

These filters are used in a wide range of applications world-wide, helping system users to maintain critical system cleanliness levels.

APPLICATIONS :-

- Aircraft Ground Support Equipment
- Civilian and Military Ships
- Industrial Power Units
- Mobile Equipment

Specification

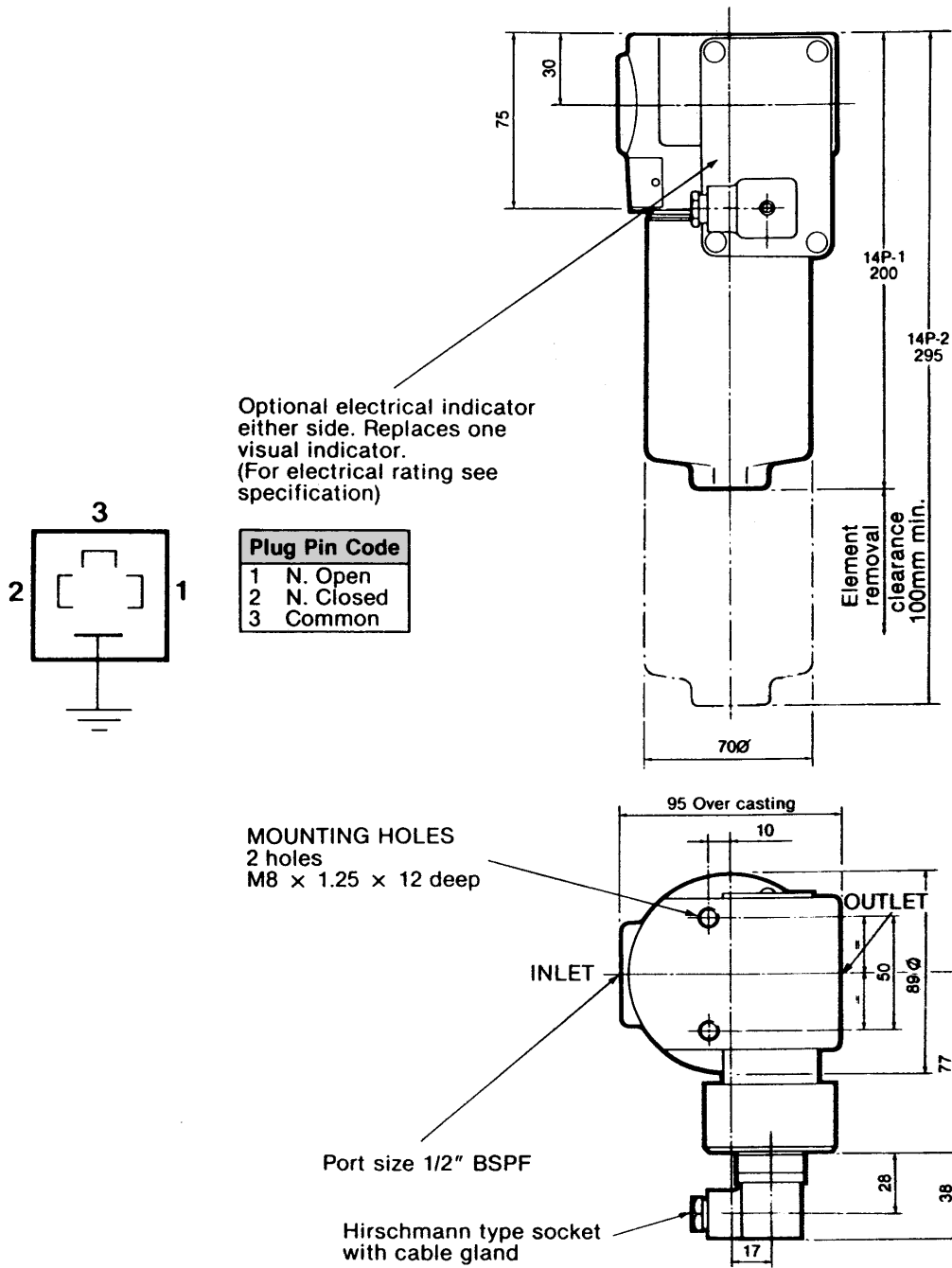
Working Pressure:	Max 350 bar
Static Safety Factor:	3.5 to 1, minimum burst of 1240 bar
Seal Material:	Nitrile (ordering code B) or Fluoroelastomer* (ordering code V)
Operating Temperatures:	-40° to 121°C
Filter Media:	Wire mesh or composite media, ratings 40 to 2 micron
Element Collapse Rating:	Standard 20 bar, high collapse 207 bar
Visual Indicator:	Visual indicator on both sides of the filter head is mechanically linked to by-pass valve. The indicator shaft is stainless steel fitted with Fluoroelastomer* seals as standard
By-pass Valve:	Opens when pressure differential exceeds 6 bar
Filter Housing:	Head material SG iron, bowl material steel extrusion
Weights (Kg):	14P-1 = 5kg 14P-2 = 6kg 24P-1 = 9kg 24P-2 = 11kg 34P-1 = 18.1kg 34P-2 = 25.2kg

*Fluoroelastomers are available under various registered trademarks, including Viton (a registered trademark of DuPont) and Fluorel (a registered trademark of 3M)

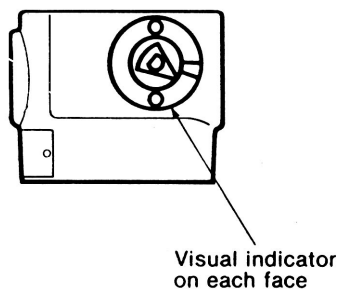
Optional Electrical Indicator with Hirschmann Type Connector. (For plug pin code see chart below)

ELECTRICAL RATINGS				
VOLTAGE	RESISTIVE LOAD AMP	TUNGSTEN LAMP LOAD	NC-AMP-NO	INDUCTIVE LOAD AMP
AC				
125	10	2	1	10
250	10	1.5	1	10
380	6			6
480	5			5
DC				
UPTO 15	15	3	1.5	15
30	10	3	1.5	10
50	3	0.8	0.8	2.5
75	1	0.6	0.6	0.5
125	0.5	0.5	0.5	0.07
250	0.25	0.25	0.25	0.03

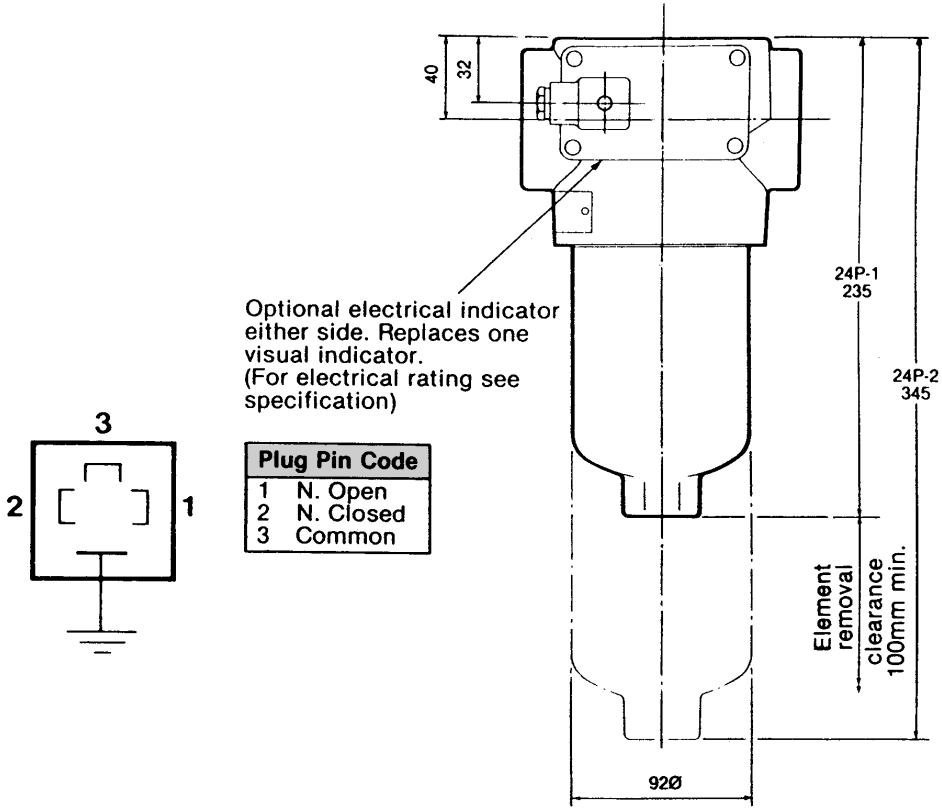
Model 14P INSTALLATION DETAILS :-



Indicator Detail



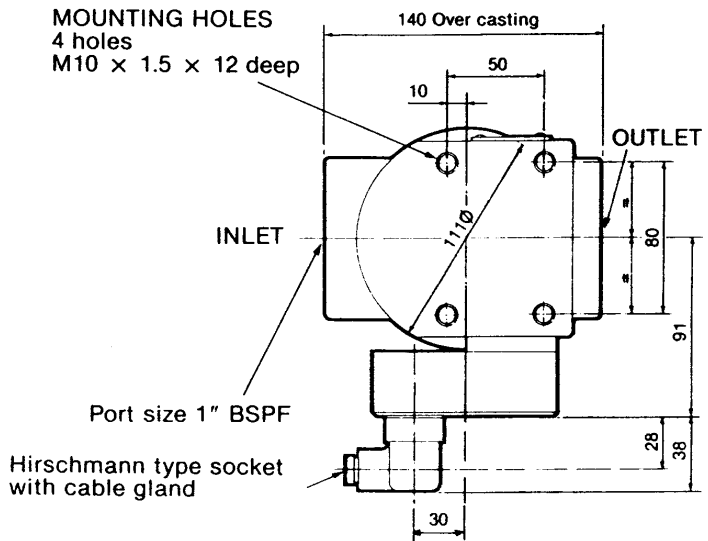
Model 24P INSTALLATION DETAILS :-



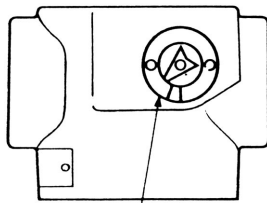
Optional electrical indicator either side. Replaces one visual indicator. (For electrical rating see specification)

Plug Pin Code	
1	N. Open
2	N. Closed
3	Common

MOUNTING HOLES
4 holes
M10 x 1.5 x 12 deep

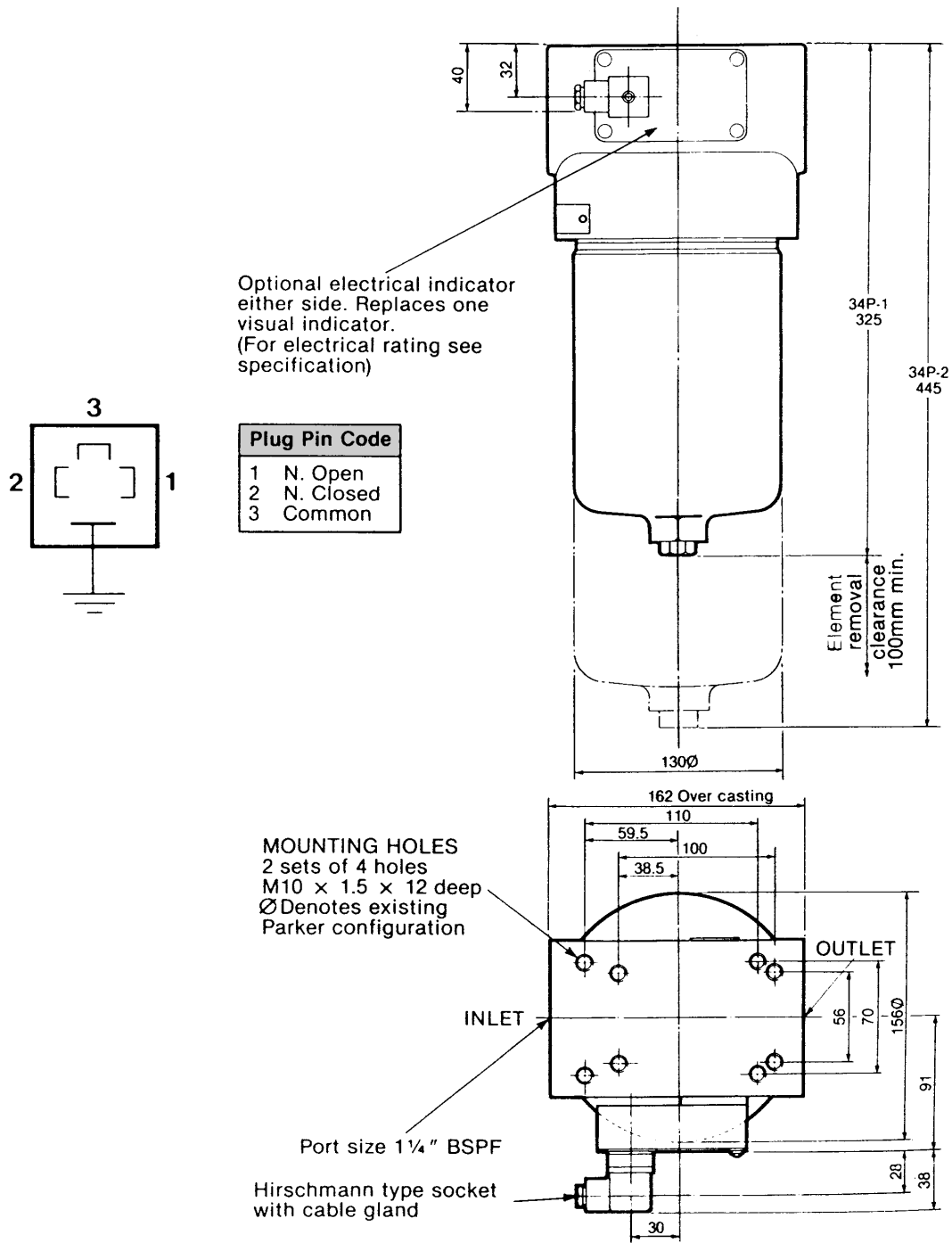


Indicator Detail

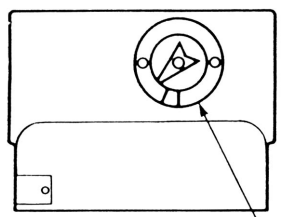


Visual indicator on each face

Model 34P INSTALLATION DETAILS :-

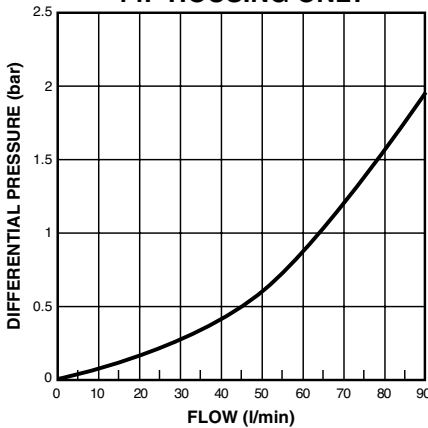
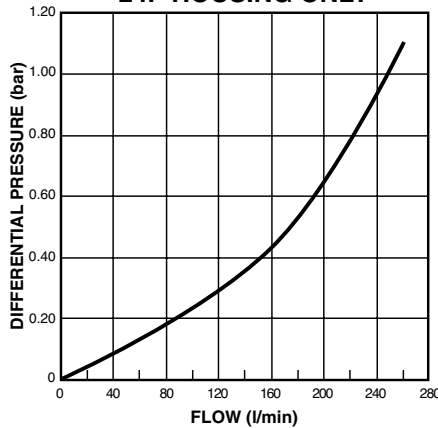
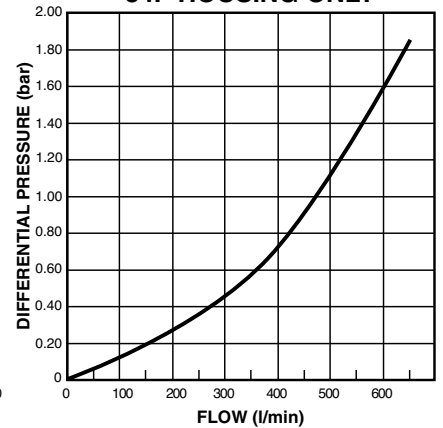
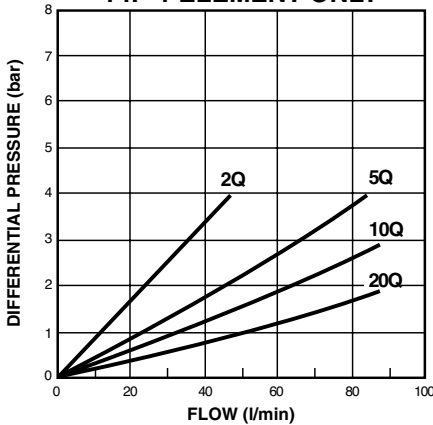
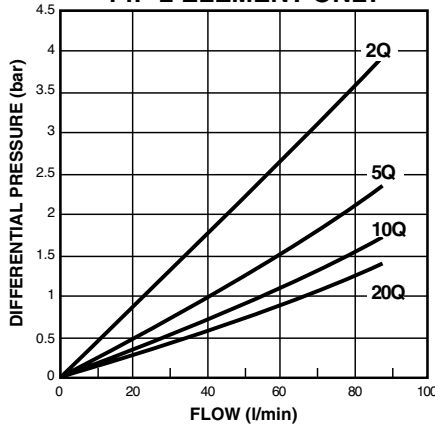
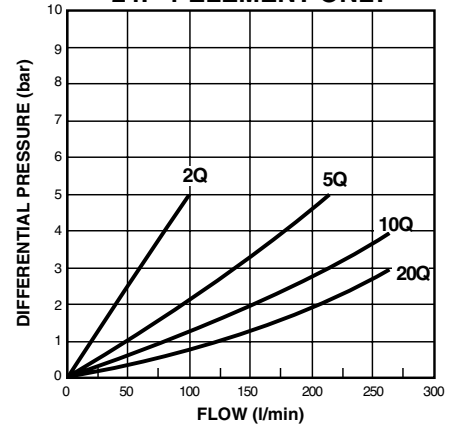
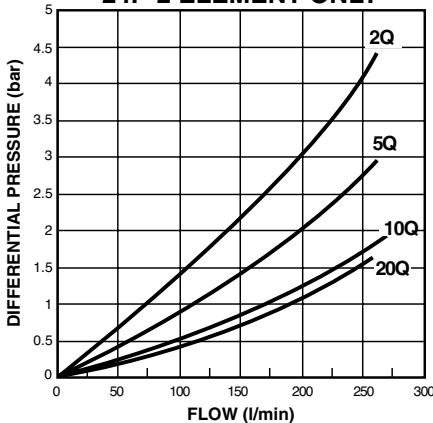
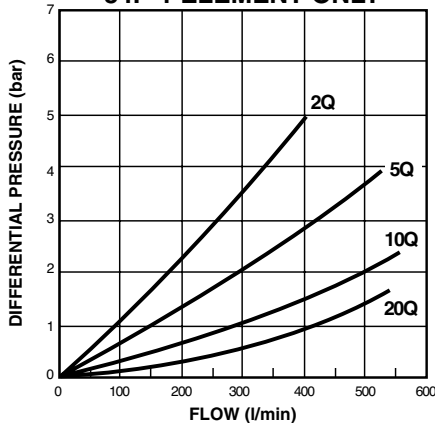
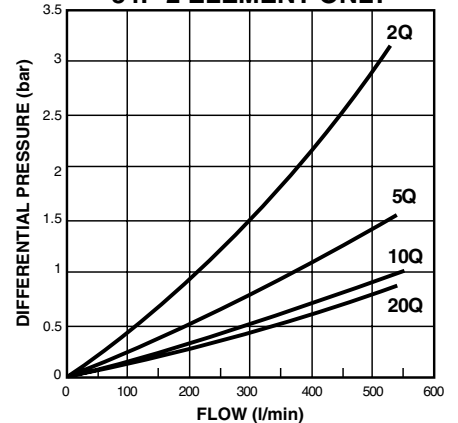


Indicator Detail



Visual indicator on each face

TYPICAL FLOW PRESSURE CURVES

PRESSURE-FLOW CURVE
14P HOUSING ONLYPRESSURE-FLOW CURVE
24P HOUSING ONLYPRESSURE-FLOW CURVE
34P HOUSING ONLYPRESSURE DROP/FLOW TEST
14P-1 ELEMENT ONLYPRESSURE DROP/FLOW TEST
14P-2 ELEMENT ONLYPRESSURE DROP/FLOW TEST
24P-1 ELEMENT ONLYPRESSURE DROP/FLOW TEST
24P-2 ELEMENT ONLYPRESSURE DROP/FLOW TEST
34P-1 ELEMENT ONLYPRESSURE DROP/FLOW TEST
34P-2 ELEMENT ONLY

PREFERRED PRODUCTS TABLE :-

PREMIER

PRODUCTS

The following filters are supplied with 6 bar bypass and Nitrile seals & dual visual indicators as standard. NB; When fitted with an electrical indicator, the filter part number incorporates this, with a code to signify which side of the filter head the electrical indicator is fitted.

Part Number	Flow (l/min)	Micron Rating	Ports	Indicators	Replacement Elements
14P-1-02Q-M-I	45	02Q	G 1/2	Dual Visual	G01370Q
14P-1-10Q-M-I	60	10Q	G 1/2	Dual Visual	G01369Q
14P-1-20Q-M-I	65	20Q	G 1/2	Dual Visual	G01775Q
14P-1-10Q-ME-I	60	10Q	G 1/2	Dual Visual/Electrical	G01369Q
14P-1-10Q-MEL-I	60	10Q	G 1/2	Dual Visual/Electrical	G01369Q
14P-2-02Q-M-I	60	02Q	G 1/2	Dual Visual	G01403Q
14P-2-10Q-M-I	70	10Q	G 1/2	Dual Visual	G01402Q
14P-2-20Q-M-I	75	20Q	G 1/2	Dual Visual	G01922Q
14P-2-10Q-ME-I	70	10Q	G 1/2	Dual Visual/Electrical	G01402Q
14P-2-10Q-MEL-I	70	10Q	G 1/2	Dual Visual/Electrical	G01402Q
14P-2-10QH-M-I-I	60	10Q	G 1/2	Dual Visual	G01402Q
24P-1-02Q-M-I	120	02Q	G 1	Dual Visual	G01282Q
24P-1-10Q-M-I	160	10Q	G 1	Dual Visual	G01281Q
24P-1-20Q-M-I	180	20Q	G 1	Dual Visual	G01930Q
24P-1-10Q-ME-I	160	10Q	G 1	Dual Visual/Electrical	G01281Q
24P-1-10Q-MEL-I	160	10Q	G 1	Dual Visual/Electrical	G01281Q
24P-2-02Q-M-I	165	02Q	G 1	Dual Visual	G01403Q
24P-2-10Q-M-I	185	10Q	G 1	Dual Visual	G01402Q
24P-2-20Q-M-I	195	20Q	G 1	Dual Visual	G01938Q
24P-2-10Q-ME-I	185	10Q	G 1	Dual Visual/Electrical	G01402Q
34P-1-02Q-M-I	480	02Q	G1 1/4	Dual Visual	G01069Q
34P-1-10Q-M-I	540	10Q	G1 1/4	Dual Visual	G01068Q
34P-1-20Q-M-I	560	20Q	G1 1/4	Dual Visual	G01946Q
34P-2-02Q-M-I	500	02Q	G1 1/4	Dual Visual	G01099Q
34P-2-10Q-M-I	530	10Q	G1 1/4	Dual Visual	G01098Q
34P-2-20Q-M-I	565	20Q	G1 1/4	Dual Visual	G01954Q
34P-2-10Q-ME-I	530	10Q	G1 1/4	Dual Visual/Electrical	G01098Q
34P-2-10Q-MEL-I	530	10Q	G1 1/4	Dual Visual/Electrical	G01098Q
34P-2-20Q-ME-I	565	20Q	G1 1/4	Dual Visual/Electrical	G01954Q

NOTE: Filters ordered from the Part Number Matrix below are on extended lead times. Where possible, please make your selection from the table above.

PART NUMBER MATRIX :-

Table 1 F3	Table 2 24	Table 3 P	Table 4 I	Table 5 10Q	Table 6 M	Table 7 I	Table 8 -
---------------	---------------	--------------	--------------	----------------	--------------	--------------	--------------

Table 1

SEALS	
Description	CODE
Buna (Standard)	0
Viton (Optional)	F3*

Indicator shaft seals are Viton as standard

Table 2

MODEL	
14	
24	
34	

Table 4

ELEMENT LENGTHS	
Description	CODE
Single Length	1
Double Length	2

Table 5

FILTER MEDIA	
Description	CODE
Reusable Wire Mesh. 40 micron absolute	40W
Reusable Wire Mesh. 25 micron absolute	25W
Disposable Composite. 2 micron absolute	02Q
Disposable Composite. 10 micron absolute	10Q
Disposable Composite. 20 micron absolute	20Q
High Collapse Rating Composite. 2 micron absolute	02QH SQ
High Collapse Rating Composite. 10 micron absolute	10QH SQ

The micron ratings are in accordance with ISO2942.

Table 6

OPTIONAL INDICATORS	
Description	CODE
Mechanical Indicators Standard on LH & RH Sides	M
Mechanical Indicator LHS Electrical Indicator RHS	ME*
Mechanical Indicator RHS Electrical Indicator LHS	MEL*

Note: Left hand & right hand are when viewed on inlet port with bowl down

Table 7

MODIFICATIONS	
Description	CODE
With Bypass	1
With Bypass and Magnets	3*
No Bypass	11
No Bypass and Magnets	12*

Table 8

DESIGN NUMBER	
Applied to the filter assembly by Parker Filtration Division. Use the full filter model code, including the design number when ordering replacement parts, elements & cartridges.	

IS THIS CORRECT?

REPLACEMENT ELEMENT PART NUMBERS SINGLE LENGTH			
Media Reference	14P	24P	34P
40W	G01367Q	G01279Q	G01066Q
25W	G01368Q	G01280Q	G01067Q
02Q	G01370Q	G01282Q	G01069Q
10Q	G01369Q	G01281Q	G01068Q
02QH	G01429Q	G01442Q	G01454Q
10QH	G01428Q	G01441Q	G01453Q

REPLACEMENT ELEMENT PART NUMBERS DOUBLE LENGTH			
Media Reference	14P	24P	34P
40W	G01400Q	G01313Q	G01096Q
25W	G01401Q	G01314Q	G01097Q
02Q	G01403Q	G01316Q	G01099Q
10Q	G01402Q	G01315Q	G01098Q
02QH	G01435Q	G01448Q	G01460Q
10QH	G01434Q	G01447Q	G01459Q

* Option effects price of filter