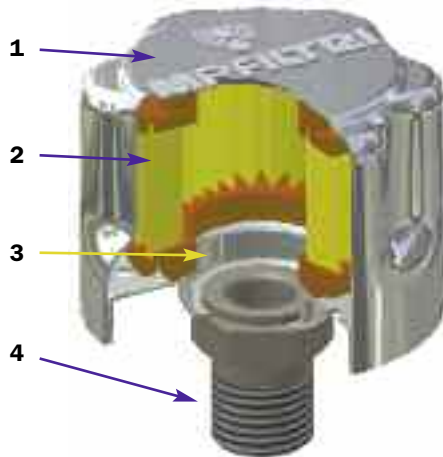


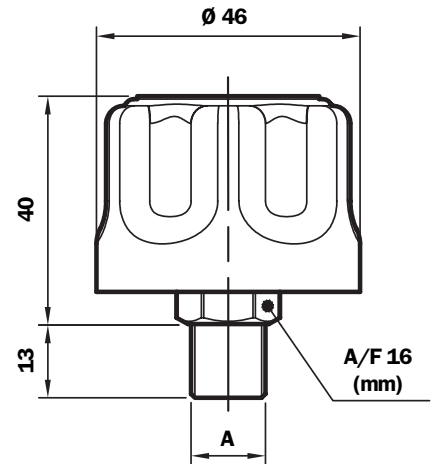
Dimensions

TA46G-N...P01

With filter



Threaded connection



TA46 G - N (Materials)

- 1 - Cover: Chrome plated steel
- 2 - Filter element: Impregnated paper
Polyurethane
- 3 - Flange: Galvanised Steel
- 4 - Threaded connection: Phosphated Steel

Flow rate with Δp : 0,02 bar

Filtration	l_N/min
3 μm	150
10 μm	200

Weight

TA 46: 0,110 kg

Connection	A
G	G 1/4"
N	1/4" NPT

Ordering information

Breather filter

	1	2	3
TA46	<input type="checkbox"/>	<input type="checkbox"/>	<input type="checkbox"/>
Example: TA46	G	03	P01

1 - Connection to reservoir

G	G 1/4"
N	1/4" NPT

3 - Options

P01	MP Filtri standard
------------	--------------------

2 - Filter element

03	3 μm - Impregnated paper
10	10 μm - Polyurethane

TA80.....P01

With filter



TA80.03.9P01

With anti-splash feature



TA80....1P01

With filter and pressurisation valve



Ordering information

Breather filter

TA80

Example: TA80

1	2	3	4	5
<input type="checkbox"/>	<input type="checkbox"/>	<input type="checkbox"/>	<input type="checkbox"/>	<input type="checkbox"/>
G	03	A	1	P01

1 - Connection to reservoir

<input type="checkbox"/>	G 3/4"
<input type="checkbox"/>	3/4" NPT

2 - Filter element

<input type="checkbox"/>	3 µm - Impregnated paper
<input type="checkbox"/>	10 µm - Polyurethane

3 - Seal

<input type="checkbox"/>	Without
<input type="checkbox"/>	NBR (pressurised only)

4 - Valves

<input type="checkbox"/>	Without
<input type="checkbox"/>	0,3 bar pressurisation valve
<input type="checkbox"/>	0,7 bar pressurisation valve
<input type="checkbox"/>	Anti-splash feature (only with filter element 3 µm)

5 - Options

<input type="checkbox"/>	P01 MP Filtri standard
--------------------------	------------------------

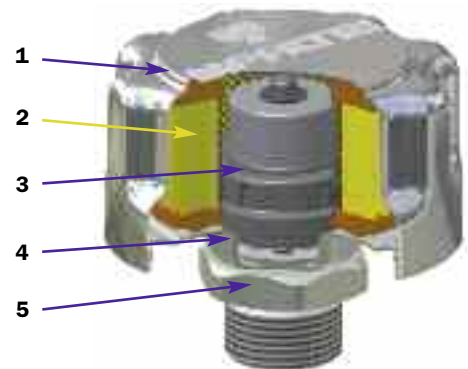
Flow rate with Δp : 0,02 bar

Filtration	I_N /min
3 µm	450
10 µm	550

Weight

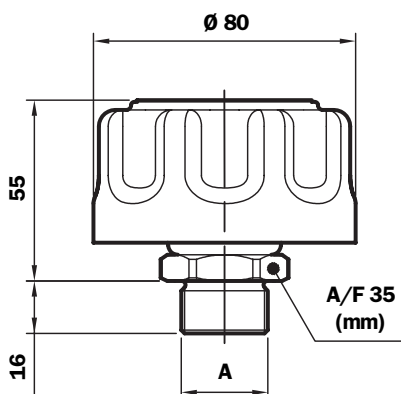
TA 80: 0,350 Kg

TA80



Dimensions

Threaded connection



Connection	A
G	G 3/4"
N	3/4" NPT

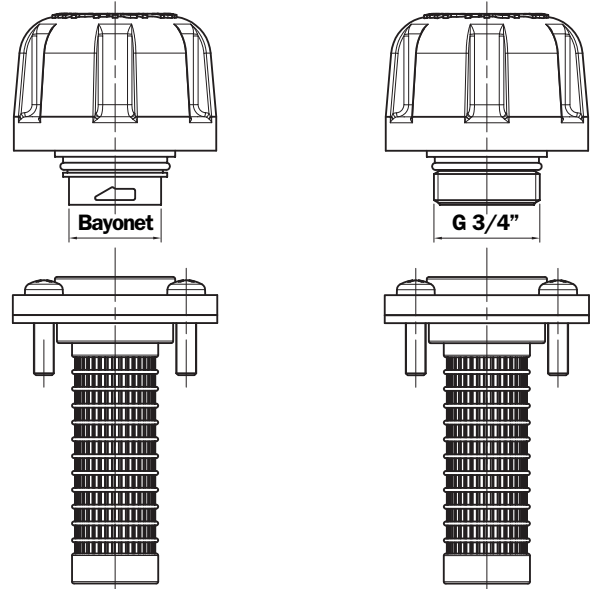
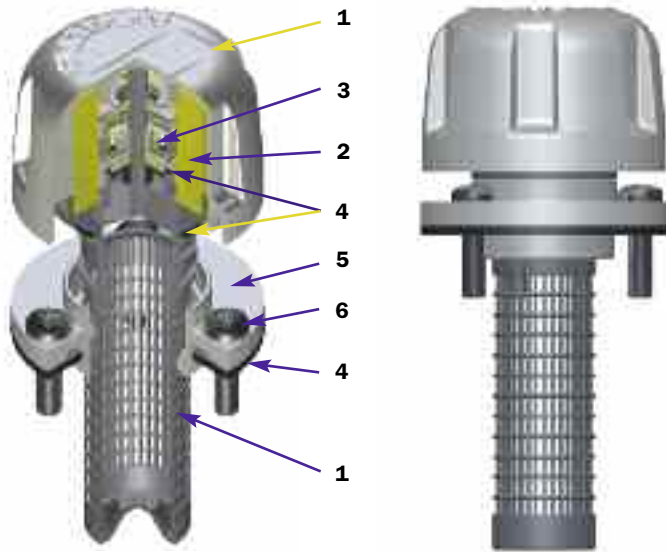
TA80 G (Materials)

- 1 - Cover: Chrome Plated Steel
- 2 - Filter element: Impregnated paper
Polyurethane
- 3 - Pressurisation valve: Nylon
Galvanised Steel
NBR
- 4 - Flange: Galvanised Steel
- 5 - Threaded connection: Galvanised Steel
- 6 - Anti-slosh feature: Galvanised Steel

Series TAP 50

Nylon oil filler and air breather filler caps

Dimensions



TAP50 (Materials)

- 1 - Cover/ringnut: Nylon
- 2 - Filter element: Impregnated paper
Polyurethane
- 3 - Pressurisation valve: Nylon
Galvanised Steel
NBR
- 4 - Seal: NBR
- 5 - Flange: Nylon
- 6 - Screws: Galvanised Steel
- 7 - Basket: Nylon

Flow rates with Δp : 0,02 bar

Filtration	l/min
10 μ m	202

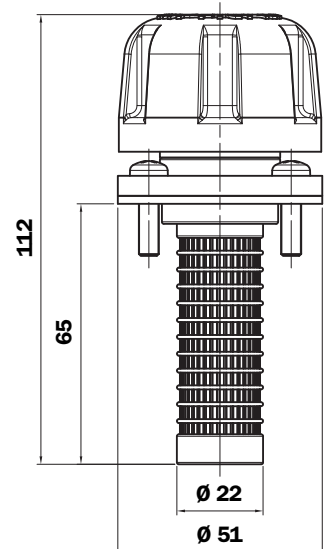
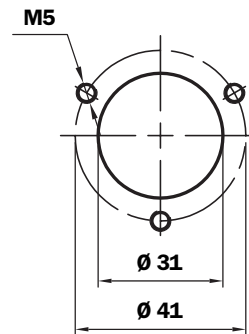
Quantity per pack Number of Parts

TAP50	10
-------	----

Weight

TAP50: 0,060 kg

Reservoir holes



Ordering information

Filler cap

TAP50

Example: TAP50 B 10 A 0 1 P01

1 - Connection to reservoir

- B** Flange with bayonet connection
- C** Flange with bayonet connection G 3/4"

2 - Filter element

- 03** 3 μ m - Impregnated paper
- 10** 10 μ m - Polyurethane

3 - Seal

- A** NBR

4 - Valves

- 0** Without
- 1** 0,5 bar pressurisation valve

5 - Basket

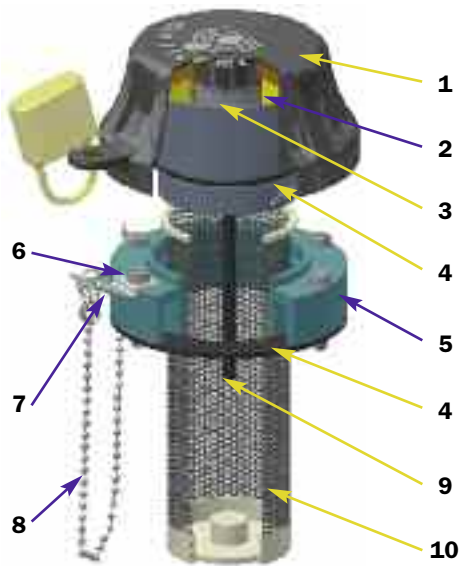
- 1** L= 65 mm

6 - Options

- P01** MP Filtri standard

Series TAP 90

Nylon oil filler and air breather filler caps



TAP90 (Materials)

- 1 - Cover/ringnut: Nylon
- 2 - Filter element: Impregnated paper
Polyurethane
- 3 - Pressurisation valve: Nylon
Galvanised Steel
NBR
- 4 - Seal: NBR
- 5 - Flange B: Nylon
- 6 - Screws: Galvanised Steel
- 7 - Padlock tab: Galvanised Steel
- 8 - Chain, ring: Brass
- 9 - Dipstick: Phosphated Steel
- 10 - Basket: Galvanised Steel/Nylon

Flow rate with Δp : 0,02 bar

Filtration	l/min
3 μ m	450
10 μ m	550

Weight

Basket L 120 mm:	0,250 Kg
Basket L 250 mm:	0,310 Kg

TAP90 B.....
Flange with
bayonet connection

TAP90 R.....
Flange with
M52x2 connection

TAP90 F.....
Flange with spigot
DIN 24557 Connection
M52x2

TAP90 C.....
Weld riser
Connection M52x2



External chain



Internal chain



Internal chain



Weld riser in
Galvanised Steel,
internal chain

TAP90 B-C-R-F
With dipstick

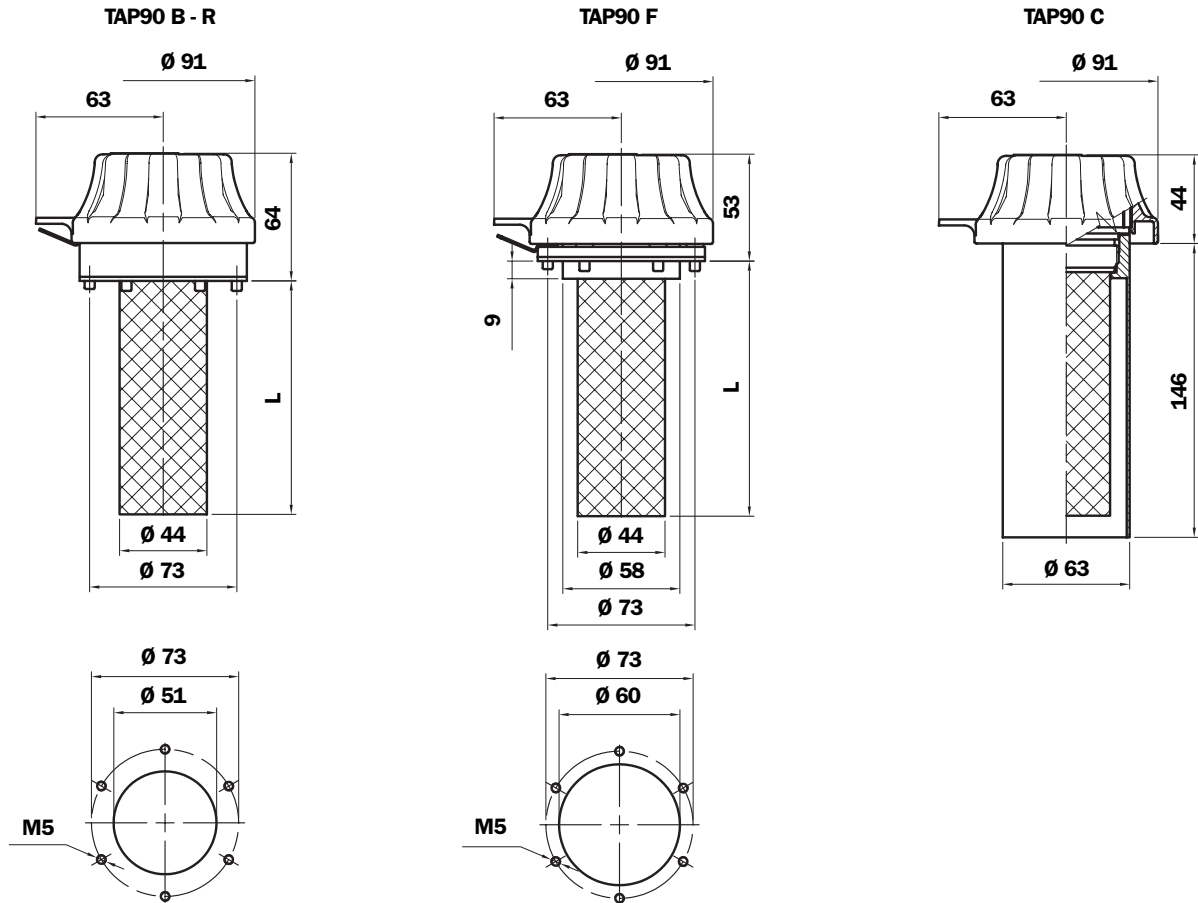
TAP90 B-C-R-F
Closed filler cap without
filter element

TAP90 B-C-R-F
Filler cap with filter
element

TAP90 B-C-R-F
Filler cap with
pressurisation valve

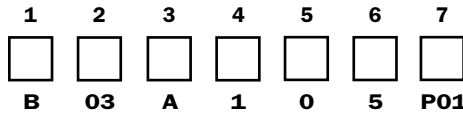


Dimensions



Ordering information

Filler cap
TAP90
Example: TAP90



1 - Connection to reservoir

- B** Flange with bayonet connection
- C** Weld riser (M52X2 version only)
- F** Flange with threaded M52x2 connection Spigot Ø 60 (DIN 24557)
- R** Flange with M52X2 threaded connection

2 - Filter element

- 00** Without filter (Blank filler cap)
- 03** 3 µm - Impregnated paper
- 10** 10 µm - Polyurethane

3 - Seal

- A** NBR

4 - Valves

- 0** Without
- 1** 0.3 bar pressurisation valve
- 2** 0.7 bar pressurisation valve

5 - Variantes

- 0** Standard
- L** With Padlock tab
- A** With Dipstick
- C** With Chain external for connection **B**
With Chain internal for connection **C-F-R** (with basket only)
- D** With Padlock tab and chain external for connection **B**
With Padlock tab and chain internal for connection **C-F-R** (with basket only)
- E** Dipstick and chain external (only connection **B**)
- F** Dipstick and Padlock tab
- G** Dipstick, Padlock tab and chain external (only connection **B**)

6 - Basket (Stainless steel basket on request)

- 0** Without
- 1** L= 120 mm
- 3** L= 250 mm

In the version with chain the L= 120 basket features a press fitting.

7 - Options

- P01** MP Filtri standard

Series TAP 114

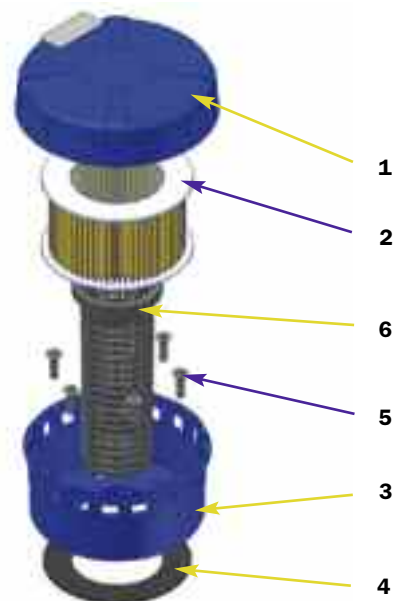
Nylon oil filler and air breather filler caps



**Example
TAP114
Length 1**



**Example
TAP114
Length 2**

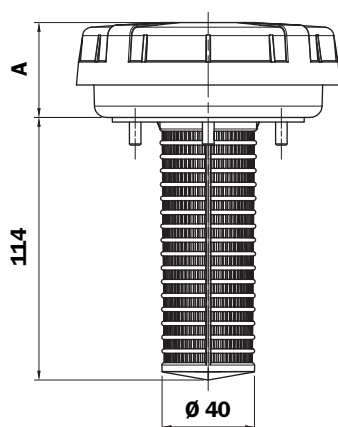


TAP114 (Materials)

- 1 - Cover: Nylon
- 2 - Filter element: Impregnated paper
- 3 - Flange: Nylon
- 4 - Seal: NBR
- 5 - Screws: Galvanised Steel
- 6 - Basket: Nylon

Dimensions

TAP 114



Length	A
1	41
2	56
3	68

Flow rates with Δp : 0,02 bar

Length 1

Filtration	l/min
10 μm	1450

Length 2

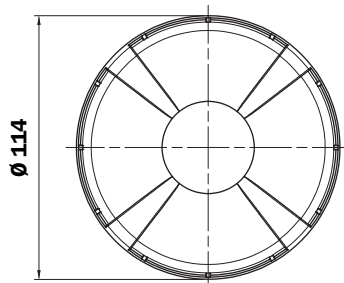
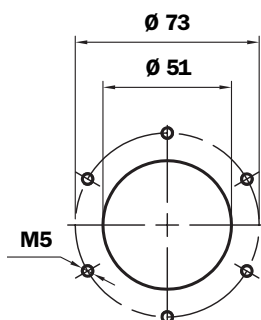
Filtration	l/min
10 μm	1600

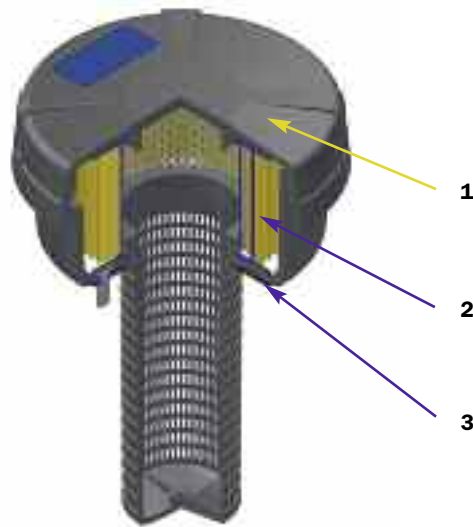
Weight

TAP 114 1: 0,185 Kg

TAP 114 2: 0,200 Kg

Reservoir holes





TAP 114 spare parts

Item.	Description	Q.ty	Filler cap series TAP 114	
1	Complete filler cap	1	See order table	
2	Filter Element	1	See order table	
3	Seal	1	NBR 01026306	FPM 01026332

Ordering information

Filler cap
TAP114

1	2	3	4	5
<input type="checkbox"/>	<input type="checkbox"/>	<input type="checkbox"/>	<input type="checkbox"/>	<input type="checkbox"/>

Example: TAP114 3 L10 A 1 P01

Filter element
A114

1	2	3
<input type="checkbox"/>	<input type="checkbox"/>	<input type="checkbox"/>

Example: TAP114 3 L10 P01

1 - Length

1
2
3

2 - Filter element

L10 10 µm - Impregnated paper

3 - Seal

A NBR

4 - Basket

1 L= 114 mm

5 - Options

P01 MP Filtri standard

Series TAP 115

Nylon oil filler and air breather filler caps



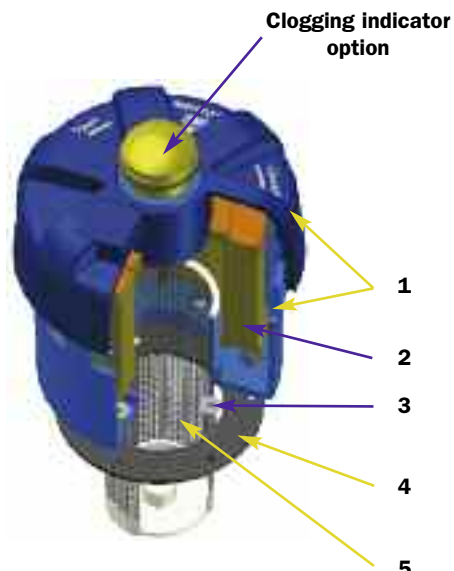
Example
TAP115

Length 1
Without indicator



Example
TAP115

Length 2
With indicator



TAP115 (Materials)

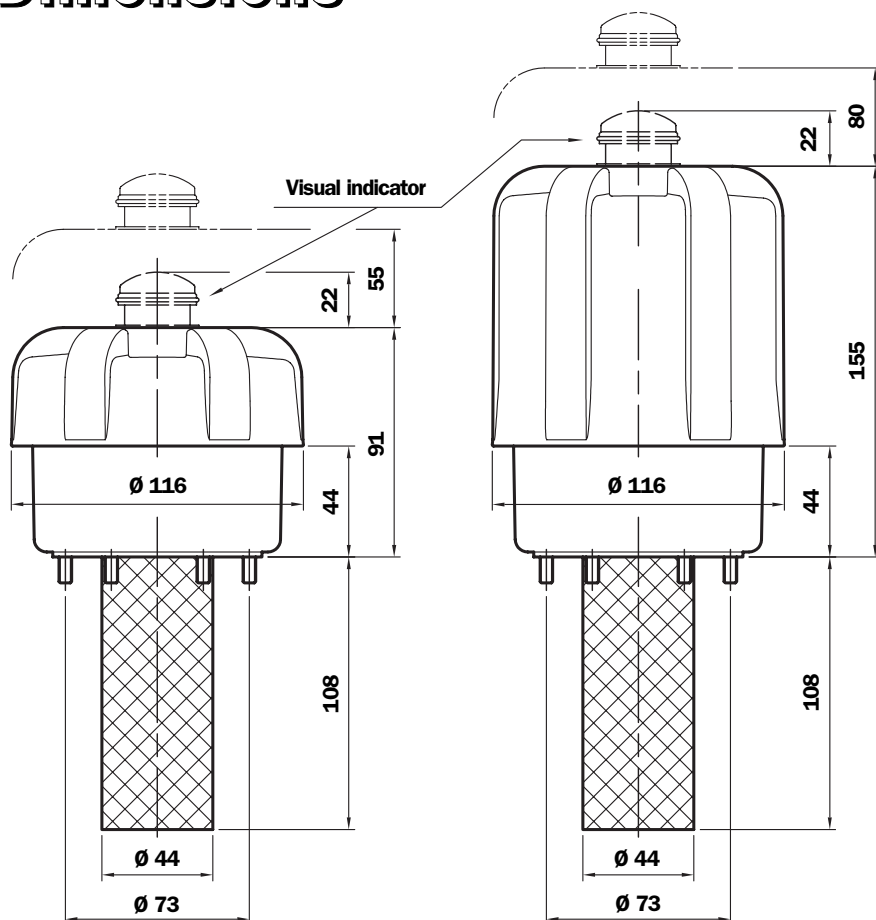
- 1 - Cover/Flange: Nylon
- 2 - Filter element: Microfibre Impregnated paper
- 3 - Seals: NBR
FPM
- 4 - Screws: Galvanised Steel
- 5 - Basket: Galvanised Steel/Nylon

Clogging indicator

Set pressure: - 0,062 bar ± 10 %

Manual reset

Dimensions



Flow rates with Δp : 0,02 bar

Length 1

Filtration	l/min
3 μ m	1600
10 μ m	2000

Length 2

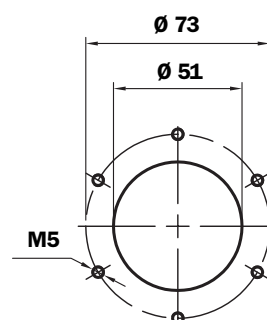
Filtration	l/min
3 μ m	2150
10 μ m	2150

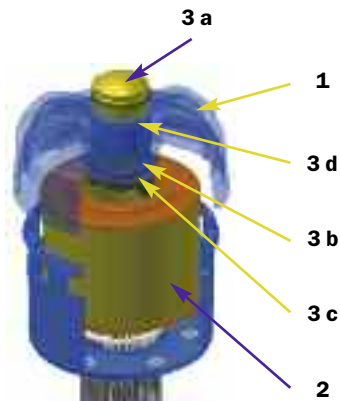
Weight

TAP 115 1: 0,460 Kg

TAP 115 2: 0,585 Kg

Reservoir holes





TAP 115 spare parts

Item.	Description	Q.ty	Filler cap series TAP 115	
1	Complete filler cap	1	See order table	
2	Filter Element	1	See order table	
3	Indicator kit	1	NBR 02005187	FPM 02005188
3a	Visual indicator	1	S62P01	
3b	Seal	1	O-R 3106 Ø 26,64 X 2,62	
3c	Indicator securing screw	1	01022670	
3d	O-R indicator	1	O-R 2112 Ø 28,3 x 1,78	

Changing the filter element in TAP 115 series filler caps

- 1 Thoroughly clean the filler cap and adjacent parts.
- 2 Unscrew and raise the cover.
- 3 Replace the filter element.
- 4 Screw the cover.



Ordering information

Filler cap	1	2	3	4	5	6	7
TAP115	<input type="checkbox"/>	<input type="checkbox"/>	<input type="checkbox"/>	<input type="checkbox"/>	<input type="checkbox"/>	<input type="checkbox"/>	<input type="checkbox"/>
Example: TAP115	2	F	A03	A	1	B	P01
Filter element	1	3	7				
A115	<input type="checkbox"/>	<input type="checkbox"/>	<input type="checkbox"/>				
Example: TAP115	2	A03	P01				

1 - Length

 1
 2

2 - Connection

 F Flange

3 - Filter element

 A03 3 µm - Microfibre
 L10 10 µm - Impregnated paper

4 - Seal

 A NBR
 V FPM

5 - Basket

 0 Without
 1 L= 120 mm

6 - Clogging indicator

 A Without
 B Clogging indicator

7 - Options

 P01 MP Filtri standard

Ordering information

Breather filter	1	2	3	4	5	6
TAP90	<input type="checkbox"/>	<input type="checkbox"/>	<input type="checkbox"/>	<input type="checkbox"/>	<input type="checkbox"/>	<input type="checkbox"/>
Exemple: TAP90	G	03	0	1	L	P01

1 - Connection to reservoir

G	M52x2
H	G 1 1/2"
L	G 1 1/4"
M	3/4" NPT
N	1" NPT
Q	G 3/4"

2 - Filter element

03	3 µm - Impregnated paper
10	10 µm - Polyurethane

3 - Seal

0	Without
A	NBR (pressurised)

4 - Pressurisation valve

0	Without
1	0,3 bar pressurisation valve
2	0,7 bar pressurisation valve

5 - Variants

0	Standard
A	With Dipstick
L	With Padlock tab
F	With Dipstick and Padlock tab

6 - Options

P01	MP Filtri standard
------------	--------------------



TAP90 (Materials)

- 1 - Cover/ringnut:** Nylon
- 2 - Breather filter:** Impregnated paper
Polyurethane
- 3 - Seal:** NBR

Flow rate with Δp: 0,02 bar

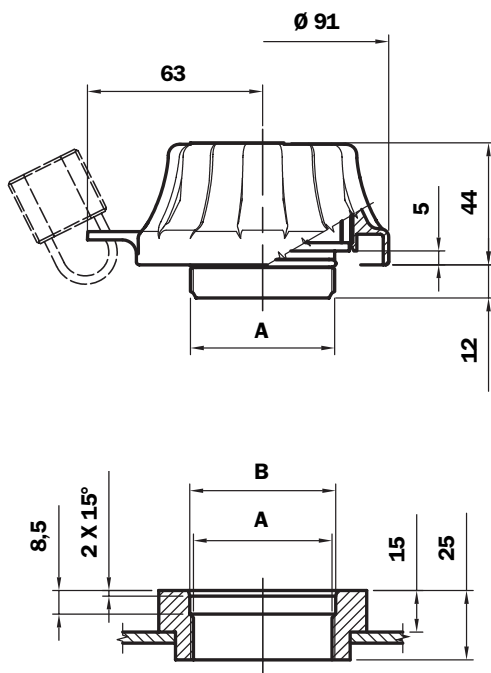
Filtration	I _N /min
3 µm	450
10 µm	550

Weight

TAP 90: 0,130 Kg

Dimensions

TAP 90 for connection on weld flange



	A	B
G	M52x2	Ø 52,5
H	G 1 1/2"	Ø 48,5
L	G 1 1/4"	Ø 42
M	3/4" NPT	-
N	1" NPT	-
Q	G 3/4"	-

TAP G
With Pressurisation



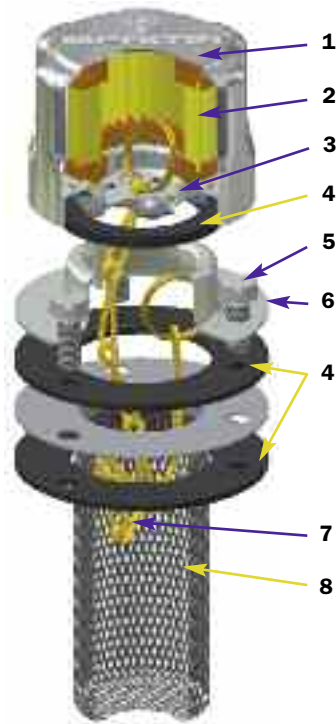
TAP G
With Dipstick



Metal oil filler and air breather filler caps

Series TA 46

Dimensions



TA46 B (Materials)

- 1 - Cover: Chrome Plated Steel
- 2 - Filter element: Impregnated paper
Polyurethane
- 3 - 6 - Flange: Galvanised Steel
- 4 - Seals: NBR
Cork Gasket
- 5 - Screws: Galvanised Steel
- 7 - Chain, ring: Brass
- 8 - Basket: Galvanised Steel

Flow rates with Δp : 0,02 bar

Filtration	l/min
3 μ m	150
10 μ m	200

Weight

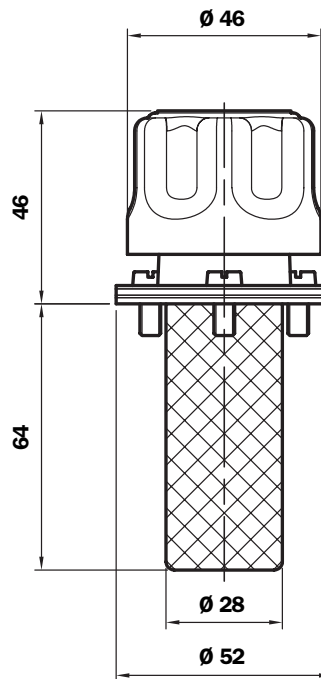
TA 46: 0,100 kg

TA 46 B

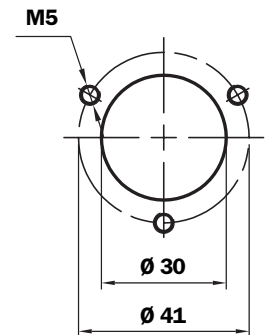
Bayonet connection
Non-removable strainer



Bayonet connection



Reservoir holes

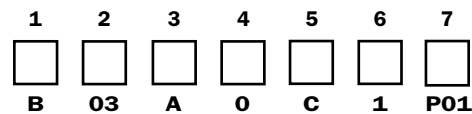


Ordering information

Filler cap

TA46

Example: TA46



1 - Connection to reservoir

- B** Flange with bayonet connection

2 - Filter element

- 03** 3 μ m - Impregnated paper
- 10** 10 μ m - Polyurethane

3 - Seal

- A** NBR
- B** Cork gasket

4 - Valves

- 0** Without valves

5 - Variants

- 0** Standard
- C** With chain

6 - Basket

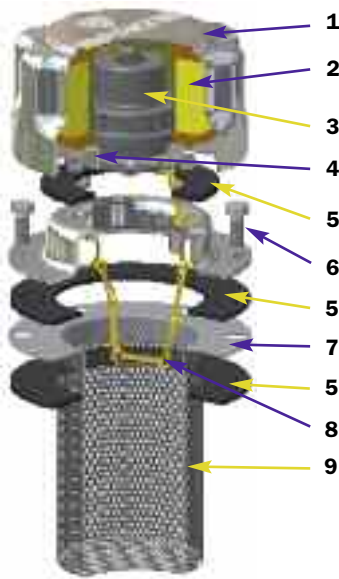
- 0** Without
- 1** L= 65 mm

7 - Options

- P01** MP Filtri standard

Series TA 80

Metal oil filler and air breather filler caps



TA80 B/D (Materials)

- 1 - Cover: Chrome Plated Steel
- 2 - Filter element: Impregnated paper
Polyurethane
- 3 - Pressurisation valve:
Bodies: Nylon
End cap-disk: Galvanised Steel
Spring: Steel
Seals: NBR
- 4 - Flange and anti-splash feature: Galvanised Steel
- 5 - Seals: Cork Gasket
NBR
- 6 - Screws: Galvanised Steel
- 7 - Flange: Galvanised Steel
- 8 - Chain, ring: Brass
- 9 - Basket TA80B: Galvanised Steel

Flow rates with Δp : 0,02 bar

Filtration	l/min
3 μm	450
10 μm	550

Weight

Strainer L 80 mm:	0,330 Kg
Strainer L 150 mm:	0,350 Kg

TA 80 B

Bayonet connection
Non-removable basket



TA 80 B

Bayonet connection
With Padlock tab



TA 80 D

Bayonet connection
Removable basket



TA80B00....P01

Bayonet connection
Closed filler cap without
filter element



TA80B10....P01

Bayonet connection
Filler cap with filter
element



TA80B03.9..P01

Bayonet connection
Filler cap with anti-splash
feature and filter element



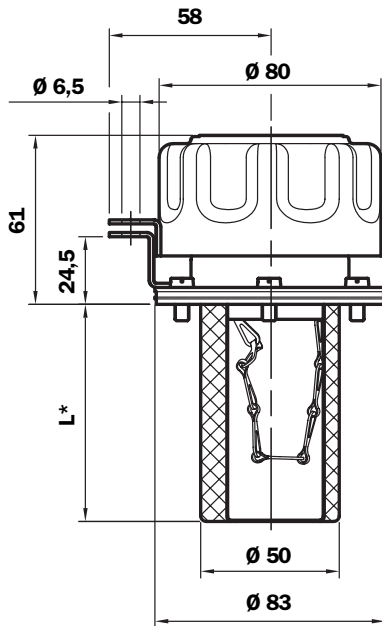
TA80B10.1..P01

Bayonet connection
Filler cap with
pressurisation valve
and filter element

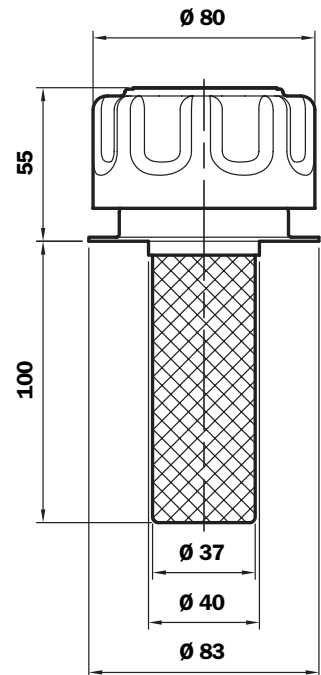


Dimensions

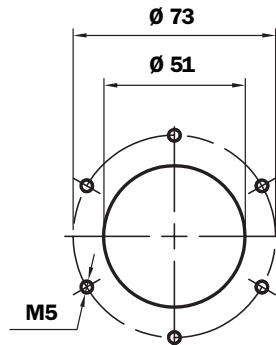
Bayonet connection



Weld flange



Reservoir holes

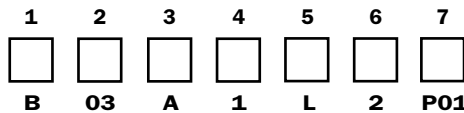


Ordering information

Filler cap

TA80

Example: **TA80**



1 - Connection to reservoir

- B** Flange with bayonet connection
- D** Weld flange

2 - Filter element

- 00** Without filter (Blank filler cap)
- 03** 3 µm - Impregnated paper
- 10** 10 µm - Polyurethane

3 - Seal

- A** NBR
- B** Cork gasket

4 - Valves

- 0** Without
- 1** 0,3 bar pressurisation valve (only with seals NBR)
- 2** 0,7 bar pressurisation valve (only with seals NBR)
- 9** Anti-splash feature (only with filter element 3 µm)

5 - Variants

- 0** Standard
- L** With Padlock tab (B versions only)

6 - Basket

- 0** Without
- 1** *L= 80 mm (B versions only)
- 2** *L= 150 mm (B versions only)
- 3** *L= 100 mm (D versions only)

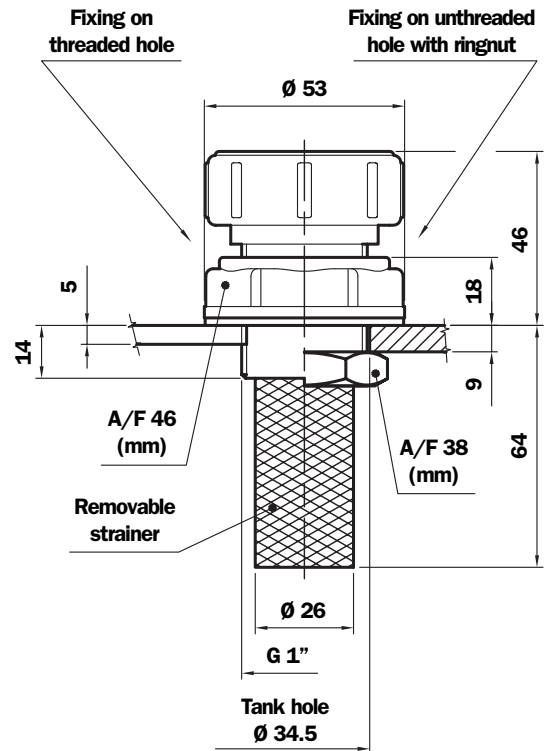
7 - Options

- P01** MP Filtri standard

TC50G1.....P01
Threaded reservoir



Dimensions



TC50GA.....P01
Unthreaded hole in reservoir



TC50 ((Materials))

- 1 - Cover: Nylon
- 2 - Filter element: Galvanised Steel
- 3 - Filler cap: Nylon
- 4 - Strainer: Galvanised Steel/Nylon
AISI 304 Nylon
- 5 - Collar: Nylon
- 6 - Seal: Inorganic fibre
- 7 - Ringnut: Phosphated Steel

Weight

- TC 50 G1: 0,070 Kg
- TC 50 GA: 0,100 Kg

Ordering information

Filler cap	1	2	3	4	5	6	7
TC50	<input type="checkbox"/>	<input type="checkbox"/>	<input type="checkbox"/>	<input type="checkbox"/>	<input type="checkbox"/>	<input type="checkbox"/>	<input type="checkbox"/>
Example: TC50	G1	L90	P	R	O	C70	P01

1 - Connection

<input type="checkbox"/> G1	G 1"
<input type="checkbox"/> GA	With ringnut

2 - Filter element

<input type="checkbox"/> L90	Galvanised steel
-------------------------------------	------------------

3 - Seal

<input type="checkbox"/> P	Inorganic fibre
-----------------------------------	-----------------

4 - Cover colour

<input type="checkbox"/> R	Red
<input type="checkbox"/> G	Yellow

5 - Cover wording

<input type="checkbox"/> O	Oil
<input type="checkbox"/> N	Neutral

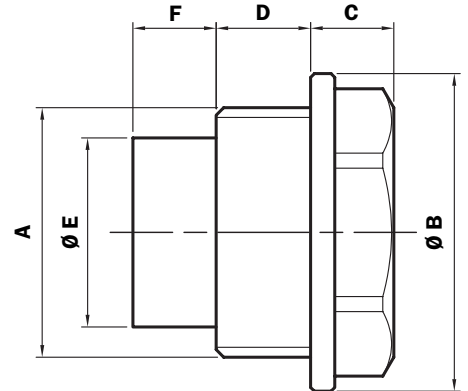
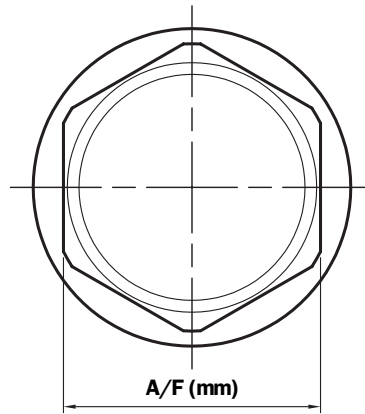
6 - Basket

<input type="checkbox"/> C70	Basket L= 70 - Galvanised Steel
<input type="checkbox"/> I70	Basket L= 70 - AISI 304
<input type="checkbox"/> S	Without

7 - Options

<input type="checkbox"/> P01	MP Filtri standard
-------------------------------------	--------------------

Dimensions



TKM (Materials)

Body: Aluminium

Seal: Inorganic fibre

Temperature

- from -25 °C to +100 °C

Compatibility

- Only mineral oils to ISO 2943

Size	A	Ø B	C	D	Ø E	F	A/F (mm)
G13	G 1/4"	19	4,5	7	9,5	6	15
G16	G 3/8"	22	8	9	8	6	18
G20	G 1/2"	28	8	9	10	8	22
G26	G 3/4"	35	9	10	12	11	27
G33	G 1"	42	11	12,5	25	11	37

N.B. Seals thickness 2 mm.

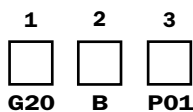
Recommended tightening torque 10÷15 Nm.

Ordering information

Filler cap

TKM

Example: TKM



1 - Size

G13	G 1/4"
G16	G 3/8"
G20	G 1/2"
G26	G 3/4"
G33	G 1"

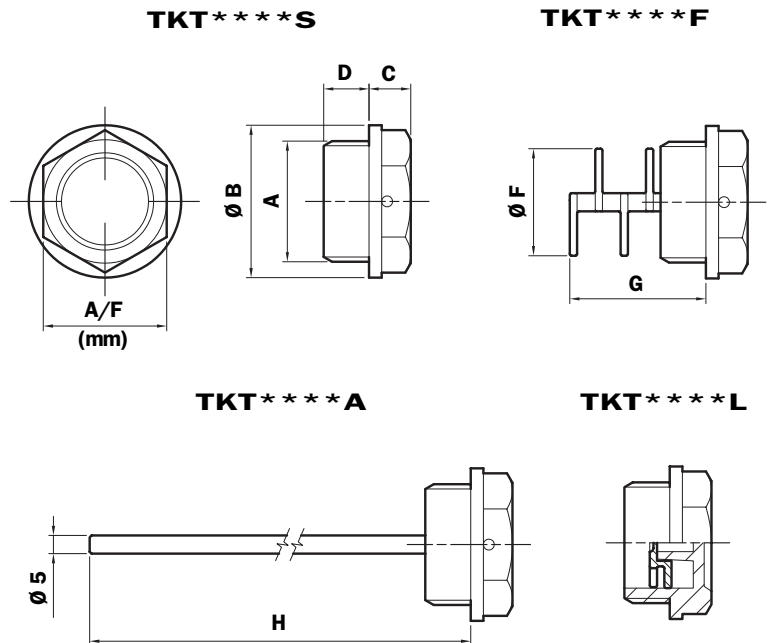
2 - Seal

B	Inorganic fibre
----------	-----------------

3 - Options

P01	MP Filtri standard
------------	--------------------

Dimensions



TKT (Materials)

- 1 - Body: Nylon
- 2 - Seals: NBR
Inorganic fibre
- 3 - Labyrinth: Nylon
- 4 - Anti-splash feature: Nylon
- 5 - Dipstick: Phosphated Steel

Quantity per pack Number of Parts

TKT 25

Size	A	Ø B	C	A/F (mm)	D	Ø F	G	H
G13	G 1/4"	20	7	17	9	-	-	206
G16	G 3/8"	22	8	18	10	13,5	33	207
G20	G 1/2"	28	8	22	11	17,5	34	208
G26	G 3/4"	35	9	27	12	23,5	35	209
G33	G 1"	42	11,5	34	12,5	29,5	37,5	202,5
G42	G 1 1/4"	52	12	42	13	38	40	203
G48	G 1 1/2"	58	14	47	13	38	38	203
G60	G 2"	74	14	64	20	-	-	200

N.B. Seals thickness 2 mm.
Recommended tightening torque 10 ± 15 Nm.

Ordering information

Filler cap
TKT
Example: TKT G20 N O A F F P01

1 - Size

G13	G 1/4"
G16	G 3/8"
G20	G 1/2"
G26	G 3/4"
G33	G 1"
G42	G 1 1/4"
G48	G 1 1/2"
G60	G 2"

2 - Colour

N	Black nylon
---	-------------

48

3 - Cover wording

N	Neutral
O	Oil

4 - Seal

A	NBR x TKT****F and TKT****A
B	Fibre inorganique x TKT****S and TKT****L

5 - Style

S	Without breather
F	Breather hole

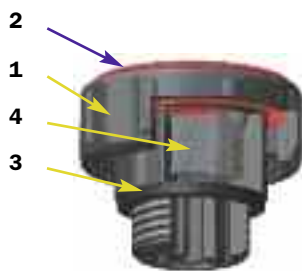
6 - Accessories

S	Without
A	Standard dipstick
F	Anti-splash feature (except G13-G60)
L	Labyrinth filter (except G33-G42-G48-G60)

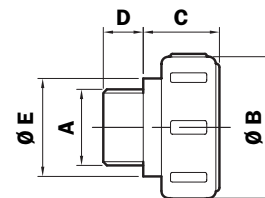
7 - Options

P01	MP Filtri standard
-----	--------------------

Dimensions

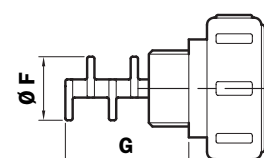
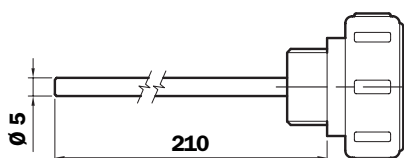


TSD****S



TSD****A

TSD****F



TSD (Materials)

- 1 - Body: Nylon
- 2 - Cover: Nylon
- 3 - Seal: NBR
- 4 - Filter: Galvanised steel
- 5 - Anti-splash feature: Nylon
- 6 - Dipstick: Phosphated Steel

**Quantity per pack
Number of Parts**

TSD 25

Size	A	Ø B	C	D	Ø E	Ø F	G
G16	G 3/8"	35	21	10	23	13,5	36
G20	G 1/2"	39	21	11	27	17,5	36
G26	G 3/4"	45	21	12	33	23,5	37
G33	G 1"	51	24,5	13	39	29,5	44
G42	G 1 1/4"	66	29,5	14	54	38	47
G48	G 1 1/2"	66	29,5	14	54	38	47

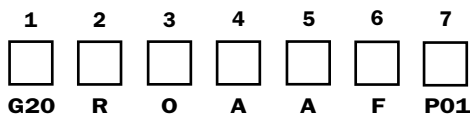
N.B. Seals thickness 2 mm.
Recommended tightening torque 10+15 Nm.

Ordering information

Filler cap

TSD

Example: TSD



1 - Size

G16	G 3/8"
G20	G 1/2"
G26	G 3/4"
G33	G 1"
G42	G 1 1/4"
G48	G 1 1/2"

2 - Cover colour

R	Red
Y	Yellow

3 - Cover wording

N	Neutral
O	Oil
G	Gasoil

4 - Seal

A	NBR
----------	-----

5 - Filter element

A	Steel (excepté "Gasoil")
O	Without

6 - Accessories

S	Without
A	Standard dipstick
F	Anti-splash feature

7 - Options

P01	MP Filtri standard
------------	--------------------